

unisanté

Centre universitaire
de médecine générale
et santé publique · Lausanne

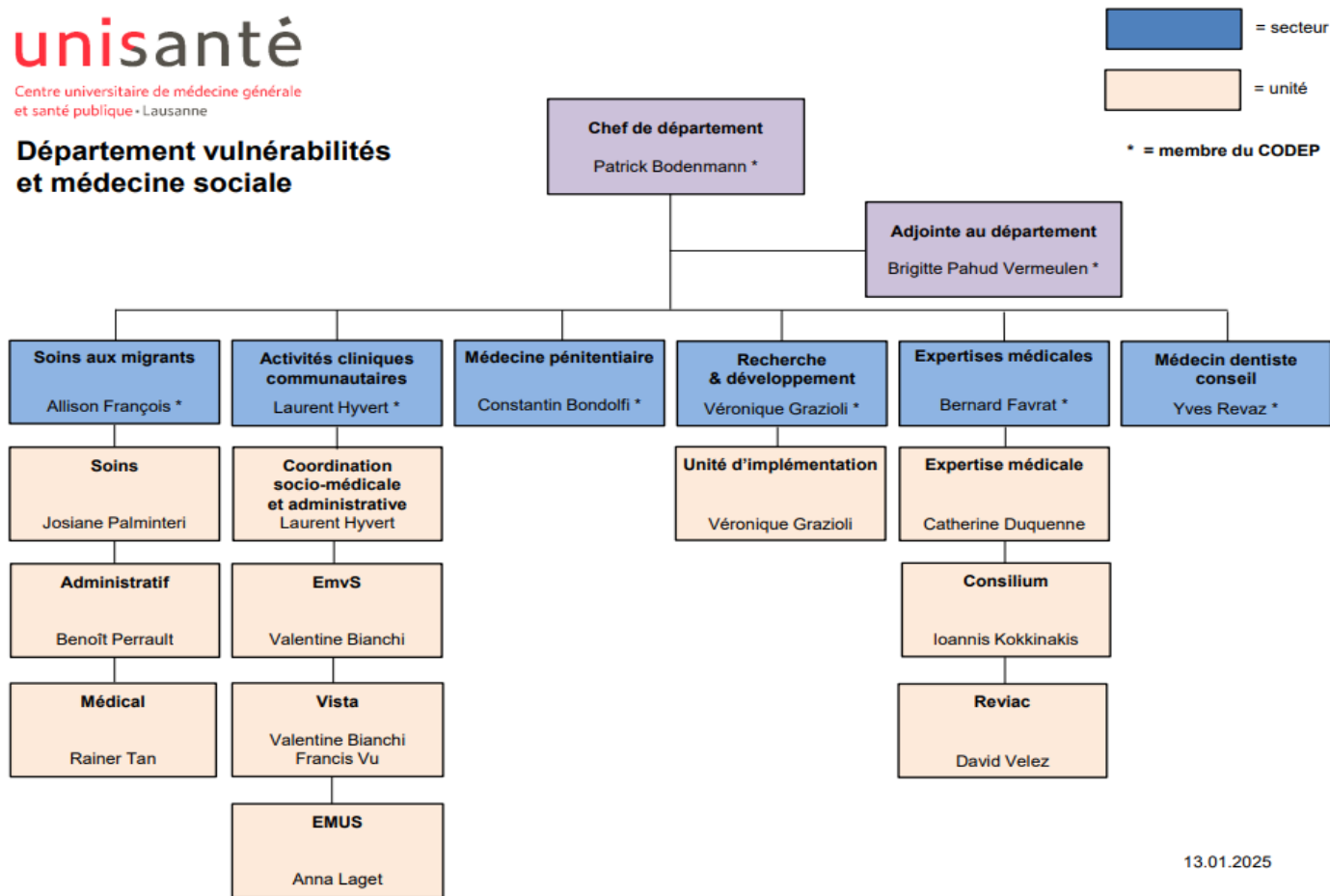
SSM - How we work

Rainer TAN et Allison FRANCOIS

March 24th 2025



Département vulnérabilités et médecine sociale



13.01.2025

WHO ?

- **75 professionals:** front-line nurses, liaison and prevention nurses, doctors, psychologists, administrative staff
- State funded specialised support care management
- In collaboration with local health and social networks
- **Target population :** Asylum seekers + war refugees under the protection and assistance of EVAM
- 12'500 beneficiaries, adults, families, non accompanied minors

WHERE ?

- **Canton of Vaud:**
- Headquarters in Lausanne and 10 clinics in 4 regions (USMi)
- An interdisciplinary team in each branch
- Covering 40 collective accommodation structures for adults and 20 for unaccompanied minors and approx. 2'500 individual apartments
- Work in progress: gradual development of on-site paediatric and psychiatric screening consultations

WHAT ?

- In 2024:
- 17'300 front-line consultations
- 2'500 vaccinations
- 2'500 liaison medical cases
- 6'000 health network contacts
- 160 group prevention/health promotion interventions

WHY?

Asylum seekers and refugees often have special healthcare needs:



Barriers to
healthcare

Unique
Health
Profiles

Barriers to healthcare



Health literacy and understanding of the health system



Perceived effectiveness and quality of health services



Medical mistrust



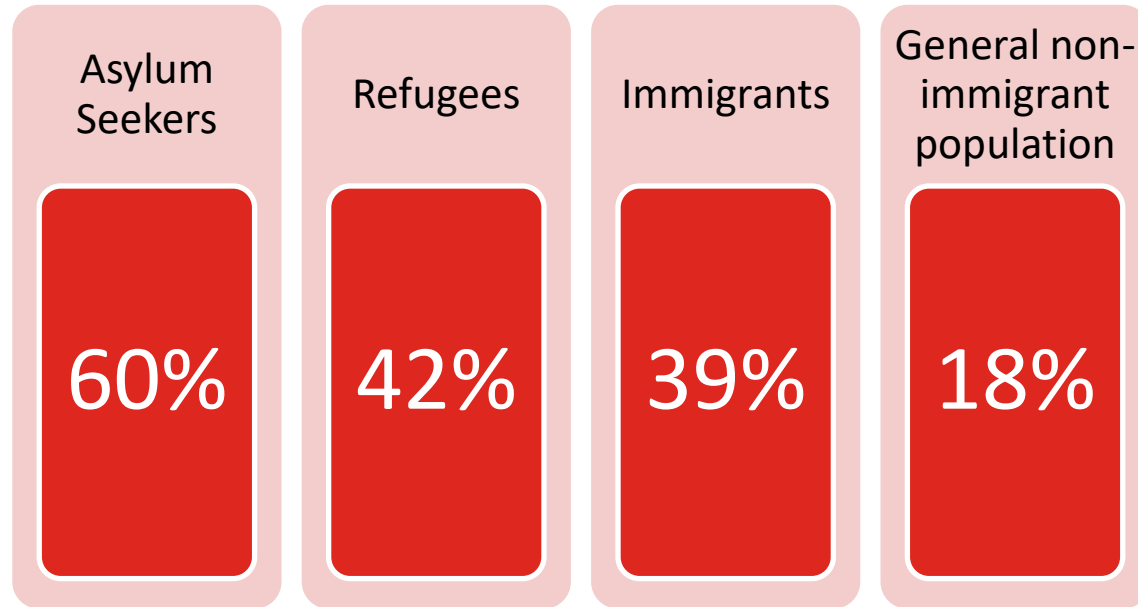
Discrimination and health professionals' attitudes



Linguistic and cultural factors

Unique Health Profiles

Self perceived poor general health status:



Unique Health Profiles



Mental Health



Infectious Diseases



Sexual and Reproductive Health



Social determinants of health



Mental Health



Infectious Diseases



Sexual and
Reproductive Health



Social determinants
of health

31.5%

PTSD

31.5%

Depression

11%

Anxiety

1.5%

Psychosis

39-99%

Insomnia



Mental Health



Infectious Diseases



Sexual and
Reproductive Health



Social determinants
of health

- Hepatitis B and C
- HIV
- Tuberculosis
- Scabies
- Varicella
- Vaccine preventable diseases
- Strongyloidiasis
- Helminths
- Schistosomiasis



Mental Health



Infectious Diseases



Sexual and
Reproductive Health



Social determinants
of health

- ↑ Sexual assault
- ↑ Unwanted pregnancies
- ↑ Induced abortions
- ↑ 4.5x incidence of severe acute maternal morbidity



Mental Health



Infectious Diseases



Sexual and Reproductive Health



Social determinants of health

MIGRATION AND THE SOCIAL DETERMINANTS OF HEALTH

Conditions surrounding migration often fuel health inequities and may expose migrants to increased health risks and negative health outcomes.



INDIVIDUAL FACTORS

age, sex & hereditary factors



LIFESTYLE FACTORS

economic class, cultural or linguistic barriers, substance abuse



LIVING CONDITIONS

access to clean water and sanitation, safe housing



WORKING CONDITIONS

access to/ existence of jobs providing living wage



SOCIAL & COMMUNITY FACTORS

existence of discrimination, stigma, social inclusion



GOVERNANCE & SOCIOECONOMIC CONDITIONS

existence of legislation and policies affecting migrants' health

Source: Adaptation of an infographic found in a World Health Organization (WHO)'s Commission on Social Determinants of Health (CDSH) report (2008:43).

© IOM's GMDAC 2017
www.migrationdataportal.org

HOW?

How do we overcome these barriers and address these health problems?



Barriers to
healthcare

Unique
Health
Profiles

Barriers and Facilitators to healthcare



Health literacy and understanding of the health system



Perceived effectiveness and quality of health services



Medical mistrust



Discrimination and health professionals' attitudes



Linguistic and cultural factors

SSM Provides Specialized Migrant Friendly Care:

- Specialized healthcare professionals in migration health
- Close collaboration with social workers and professional interpreters
- Facilitate referral to general practitioners, specialists, and psychiatrists



Mental Health



Infectious Diseases



Sexual and
Reproductive Health



Social determinants
of health

- Mental health screening
- Health professionals with ongoing mental health training and supervision
- Close collaboration with psychiatrists, and psychologists
- Facilitated referral systems
- Specific protocols for severe mental health crises



Mental Health



Infectious Diseases



Sexual and
Reproductive Health



Social determinants
of health

- Vaccination
- Screening for HIV, HBV, HCV, Strongyloidiasis, Shistosomiasis, Tuberculosis, helminths
- Management of outbreaks



Mental Health



Infectious Diseases



Sexual and
Reproductive Health



Social determinants
of health

- Screening
- Prevention and Counselling
- Referral to specialized care



Mental Health



Infectious Diseases



Sexual and
Reproductive Health



Social determinants
of health

- Close collaboration with social workers and community programs
- Close collaboration with asylum shelters